



ST GEORGE
INTERNATIONAL
ENGLISH IN
LONDON



ENGLISH COURSES IN LONDON 2022

CONTENTS

INTRODUCTION	03	GROUP EVENING COURSES	19
GENERAL ENGLISH	04	YOUNG LEARNER PROGRAMMES	20
BUSINESS ENGLISH	07	ACCOMMODATION IN LONDON	27
INDIVIDUAL TUITION	10	ACTIVITY PROGRAMME	30
IELTS PREPARATION COURSE	13		
UNIVERSITY FOUNDATION PROGRAMME	16		



St George International is an active member of English UK, the national association of accredited English language schools. English UK is the world's leading language teaching association and a guarantee of high standards.

Accredited by the
 **BRITISH COUNCIL**
for the teaching
of English

St George International is accredited by the British Council for the teaching of English in the UK. The British Council inspection scheme is recognised globally as a benchmark for high standards.

WELCOME TO SGI

TEACHING ENGLISH TO STUDENTS FROM ALL OVER THE WORLD FOR 60 YEARS.

This year at St George International (SGI), we celebrate 60 years of achieving successful outcomes for students from all over the world. We teach a range of English language courses for students aged 16+ at our school in central London. We help develop young learners aged from 6 to 17 with a range of courses to suit their interests at our summer centres.

At SGI, we believe that effective communication transforms lives and that English is a life skill that will help you achieve your dreams. With this in mind, we strive every day to live up to the highest standards of teaching and learning. Our students have consistently met and exceeded their expectations through their learning experience with us. Our teaching team, a number of whom are experienced teacher trainers, ensure that you will reach your learning goals and become a confident user of the English language.



*At SGI, we work hard to make sure
your course helps you to achieve
your personal ambitions.*

GENERAL ENGLISH



WHATEVER YOUR AMBITIONS, OUR COURSES WILL HELP YOU TO REACH YOUR PERSONAL GOALS, EXCEED YOUR EXPECTATIONS AND SUCCEED IN YOUR NEXT STEPS IN LIFE.

GENERAL ENGLISH

Your lessons enable you to develop your ability to communicate effectively in English by improving your accuracy, fluency and confidence. At SGI we will help you develop effective language skills and improve in all areas of the English language.

ABOUT THE COURSE

- Start any Monday
- Individual guidance and monitoring of your progress by your teachers
- Small groups
- Learn, review and practise new language every day
- All levels from Elementary to Advanced
- Minimum 1 week
- Minimum age 16
- 1 lesson = 1 hour



STANDARD COURSE

This general English course gives students the opportunity to improve their all-round ability in English by focusing on grammar and vocabulary development, speaking, listening, and writing skills. Our key aim is to increase students' confidence in the day-to-day use of the language. To ensure students receive stimulating and enjoyable lessons, we use a host of supplementary materials in addition to the course book. With the use of audiovisual materials, the internet and authentic texts we aim to maximise language skill development and effective communication.

EXAMPLE TIMETABLE

09:15 – 10:45	Group English
10:45 – 11:00	Break
11:00 – 12:30	Group English

ABOUT THE COURSE

- Maximum 12 students per class
- 15 hours of lessons per week
- Morning tuition
- Group tuition
- Activity programme

INTENSIVE COURSE MINI-GROUP

This programme combines the morning 'Standard' programme with an afternoon mini-group. The mini-group allows the tutor to focus on the immediate needs of the students whilst improving listening and speaking skills, expanding vocabulary and developing confidence. Activities range from discussions of issues and topics such as travel, film, culture and politics to project work and task-based learning. Work may be integrated with cultural visits outside the classroom. The emphasis is on group work and effective oral communication.

EXAMPLE TIMETABLE

09:15 – 10:45	Group English
10:45 – 11:00	Break
11:00 – 12:30	Group English
12:30 – 13:00	Lunch
13:00 – 14:00	Mini-group English

ABOUT THE COURSE

- 20 hours per week
- Morning and afternoon tuition
- Group tuition
- Maximum 12 students per morning class (Maximum 14 in July/August)
- Mini-group: Maximum 6 students per afternoon class (Max. 8 in July/August)
- Activity programme

COMBINATION COURSE

Our Combination courses integrate the Standard course with a tailor-made one-to-one programme to meet the specific needs and requirements of the student. Special attention is paid to maximising the individual's ability to communicate fully.

EXAMPLE TIMETABLE

09:15 – 10:45	Group English
10:45 – 11:00	Break
11:00 – 12:30	Group English
12:30 – 13:00	Lunch
13:00 – 16:10	One-to-one (Combination dependent)

ABOUT THE COURSE

- 15 hours per week
- Plus 4, 8, or 12 one-to-one lessons depending on combination purchased (for more info please see full timetable PG 34)
- Morning and afternoon tuition
- Activity programme

BUSINESS ENGLISH



THESE COURSES ARE DESIGNED FOR WORKING PEOPLE AT ALL STAGES OF THEIR CAREER SEEKING A PERSONALISED PROGRAMME TO IMPROVE ENGLISH SKILLS FOR WORK.

St George International's Business English courses use real life situations to help you develop your skills and show you how to apply them at work. Become confident and develop your career using English at work in an international environment.

Choose these courses to:

- Improve communication skills in and outside the working environment
- Make progress in Business English speaking, comprehension, reading and writing
- Acquire vocabulary and language specific to your area of interest
- Achieve confidence in giving presentations and taking part in meetings

ABOUT THE COURSE

- Start any Monday
- Maximum 8 students per class
- Optional afternoon General English or One-to-One lessons
- Individual guidance and monitoring of your progress by your teacher
- Enjoyable and effective learning activities
- Minimum level: Intermediate
- End of course report on request
- Activity programme



BUSINESS ENGLISH

This general English course gives students the opportunity to improve their all-round ability in English by focusing on grammar and vocabulary development, speaking, listening, and writing skills. Our key aim is to increase students' confidence in the day-to-day use of the language. To ensure students receive stimulating and enjoyable lessons, we use a host of supplementary materials in addition to the course book. With the use of audio materials, the internet and authentic texts we aim to maximise language skill development and effective communication.

THEMES

- Presentations skills
- Telephone technique
- Meetings
- Negotiations
- Correspondence
- Marketing and advertising
- Financial English
- World trade and globalisation

ENGLISH FOR SPECIFIC PURPOSES

Our considerable experience of providing intensive One-to-One courses to companies from a vast array of industry backgrounds means we are able to provide English for Specific Purpose courses on numerous subjects in the afternoon individual tuition.

These include:

- English for Financial Services
- English for Law
- English for government/public sector
- English for the automotive industry
- English for Banking
- English for Telecommunications
- English for the Oil and Gas industry
- English for Tourism

EXAMPLE TIMETABLE

09:15 – 10:45	Group English
10:45 – 11:00	Break
11:00 – 12:30	Group English

ABOUT THE COURSE

- Maximum 8 students per class
- 15 hours per week
- Morning tuition
- Mini-group tuition
- Activity programme

BUSINESS ENGLISH PLUS

A combination of the Business English morning class with a General English mini-group aiming to develop effective oral communication in social English. The focus in the afternoon is on discussion of topics such as travel, film, culture, sport and politics and task based learning with a strong emphasis on group work. This course is particularly appealing for students who would like to improve their ability to communicate clearly and effectively in both their working environment and socially.

EXAMPLE TIMETABLE

09:15 – 10:45	Group English
10:45 – 11:00	Break
11:00 – 12:30	Group English
12:30 – 13:00	Lunch
13:00 – 14:00	Mini-group English

ABOUT THE COURSE

- Maximum 8 students per morning class
- Maximum 8 students per afternoon class
- 20 hours per week
- Group tuition
- Activity programme

COMBINATION COURSE

The Business English Course followed by 5, 10 or 15 lessons per week of individual tuition. The individual tuition is tailored to the client's needs and can focus on topics particular to the client's profession.

EXAMPLE TIMETABLE

09:15 – 10:45	Group English
10:45 – 11:00	Break
11:00 – 12:30	Group English
12:30 – 13:00	Lunch
13:00 – 16:10	One-to-one (Combination dependent)

ABOUT THE COURSE

- Maximum 8 students per class
- 15 hours per week
- Plus 5, 10, or 15 one-to-one lessons
- Morning and afternoon tuition
- Activity programme



INDIVIDUAL TUITION

THESE ENGLISH LANGUAGE COURSES ARE COMPLETELY TAILOR-MADE TO YOUR PERSONAL LEARNING OBJECTIVES.



At St George International we offer a great range of intensive and semi-intensive one-to-one programmes, giving students the opportunity to immerse themselves totally in the language, practising speaking and listening over long periods and substantially improving their communication skills.

KEY FEATURES

- Start every Monday for half-day and full day programmes
- Start any day for flexi programmes
- Tuition tailored to students' professional work
- Full range of specialist areas catered for: Banking, Law, Medicine, Marketing etc
- 2-1, evening courses also available

BEFORE THE COURSE

Before a course begins a detailed language analysis takes place followed by an assessment by one of our Academic Managers. From this a course programme is then agreed, taking into consideration the specific needs associated with the students' work.

ENGLISH FOR SPECIFIC PURPOSES

Our considerable experience of providing intensive one-to-one courses to companies from a vast array of industry backgrounds.

These include:

- English for Financial Services
- English for Law
- English for Government/Public Sector
- English for the Automotive Industry
- English for Banking
- English for Telecommunications
- English for the Oil and Gas industry
- English for Tourism

FLEXIBLE PROGRAMME

A flexible programme of one-to-one tuition allows students to choose the time, place and intensity of the teaching schedule to fit in with other business commitments.

ABOUT THE COURSE

- One-to-one tuition
- Morning and afternoon tuition
- Tailor-made programme
- Activity programme

INTENSIVE AND SEMI-INTENSIVE COURSE

These programmes can be taken either in the morning or afternoon allowing the student time to integrate the programme with work commitments, self-study or a more relaxing time during their stay in London.

EXAMPLE TIMETABLE

09:15 – 10:45	One-to-one
11:15 – 12:45	
12:45 – 13:30	Lunch
15:15	Activities

ABOUT THE COURSE

- 15 hours per week - Semi-intensive
- 20 hours per week - Intensive
- One-to-one tuition
- Morning or afternoon tuition
- Tailor-made programme
- Activity programme



IELTS PREPARATION COURSE



HELPING YOU ACCESS THE WORLD OF
HIGHER EDUCATION AND INTERNATIONAL
WORK OPPORTUNITIES.

The International English Language Testing System (IELTS) is an internationally known and globally recognised direct English language assessment of the highest quality and integrity readily available throughout the world.

IELTS is a highly dependable, practical and valid English language assessment primarily used by those seeking international education, professional recognition, benchmarking to international standards and global mobility.

St George International's IELTS Preparation course runs throughout the year for those with an Intermediate level or higher, and can be started on any Monday.

ABOUT THE COURSE

- Start any Monday
- Small groups of maximum 12 students (14 in July and August)
- 1 lesson = 1 hour
- Advice on British University entrance
- IELTS exam can be arranged on request
- Individual guidance and monitoring of your progress by your teacher
- Enjoyable and effective learning activities
- Minimum level: Intermediate
- Activity programme



IELTS PREPARATION

The course is ideal for students who wish to enter a British University, as it is the key test used in the UK to assess applicants' English language ability. It is also a very popular course with students who need a proven level of English for work and career purposes.

As well as English language development and preparation vital for the IELTS, the course also focuses on academic skills and learning strategies that will help students at a British University, for example, how to research projects in a library, and giving your opinion in a seminar.

EXAMPLE TIMETABLE

09:15 – 10:45	Group English
10:45 – 11:00	Break
11:00 – 12:30	Group English

ABOUT THE COURSE

- Maximum 12 students per class (Maximum 14 in July/August)
- 15 hours per week
- Morning tuition
- Group tuition
- Activity programme

IELTS INTENSIVE

A combination of the IELTS Exam morning class with the afternoon General English class (10 lessons per week) which aims to develop the student's understanding of British culture and confidence when using social English. Activities range from discussions of issues and topics such as travel, film, culture and politics through to project work based around internet research. Study may be integrated with cultural visits outside the classroom. The emphasis is on group work and effective oral communication.

EXAMPLE TIMETABLE

09:15 – 10:45	IELTS Exam Group
10:45 – 11:00	Break
11:00 – 12:30	Group English
12:30 – 13:00	Lunch
13:00 – 14:00	General English

ABOUT THE COURSE

- 20 hours per week
- Morning and afternoon tuition
- Group tuition
- Maximum 12 students per morning class (Maximum 14 July/August)
- Mini-group: Maximum 6 students per afternoon class (Max. 8 in July/August)
- Activity programme

IELTS COMBINATION

Morning group tuition and afternoon one-to-one tuition. This course combines the IELTS Exam morning class with a tailor made one-to-one afternoon programme to meet the specific needs and requirements of the student.

You can study either 4 (Combo 4), 8 (Combo 8) or 12 (Combo 12) lessons of one-to-one each week in the afternoon.

EXAMPLE TIMETABLE

09:15 – 10:45	Group English
10:45 – 11:00	Break
11:00 – 12:30	Group English
12:30 – 13:00	Lunch
13:00 – 16:10	One-to-one (Combination dependent)

ABOUT THE COURSE

- 15 hours per week
- Plus 4, 8, or 12 one-to-one lessons
- Morning and afternoon tuition
- Activity programme



UNIVERSITY FOUNDATION PROGRAMME



TAKE YOUR FIRST STEP TO A UNIVERSITY COURSE
WITH OUR INTERNATIONAL FOUNDATION PROGRAMME

ABOUT THE COURSE

- September (36 week) and January (24 week) entry points
- Maximum 10 students in the morning (14 in the afternoon)
- 20 hours per week
- Full UCAS University Advice and Assistance service
- Enjoyable and effective learning strategies
- IELTS exam arranged for you
- Activity programme

THE PATH TO DEGREE COURSES AT BRITISH UNIVERSITIES

St George International offers a comprehensive and stimulating University Foundation Course for overseas students leading to study of primarily business-related degrees at British Universities.

This 6 or 9-month academic course, with a maximum of 14 students in a class, gives students a foundation not only in English language and culture but also in the world of Business from a European perspective.

The intensive course also offers excellent preparation and provides invaluable experience reflecting the demands of British Universities. We also arrange visits to Universities as well as having regular UCAS advice sessions to help you with your University choice.

ADVICE SERVICE

SGL's academic team is very experienced at helping students find the course and University that is right for them. Throughout the course we provide regular individual counselling sessions, advising on the courses and Universities most suitable for the student, and assisting in the completion and processing of University applications.



EXAMPLE TIMETABLE

09:15 – 10:45	Language development and skills work
11:15 – 12:45	
12:45 – 13:30	Lunch
13:30 – 15:00	Topics and modules
15:15	Activities

KEY OBJECTIVES FOR STUDENTS

- To gain access to a British University
- To learn in a friendly small group environment with maximum personal attention
- To achieve an IELTS exam score sufficient for University access
- To increase students' subject knowledge in Business, Economics and Politics
- To improve students' academic study skills sufficient to succeed at University
- To familiarise students with British Universities and life in Britain

DEVELOPING THE SKILLS YOU NEED

The Foundation Course at St George International has a strong emphasis on developing the skills students need to successfully complete their British University studies. British Universities place a great deal of emphasis on self-study and written assignment. We are aware that these areas of University study may be unfamiliar to overseas students and so ensure that they are addressed during the Foundation Course.

SUCCESSFUL STUDENTS AT BRITISH UNIVERSITIES

With our strong university and higher education links we have a growing number of successful former students who have completed our University Foundation course and gone on to study an undergraduate or postgraduate degree programme in the UK.

THESE NOTABLY INCLUDE:

- Oxford University
- The London School of Economics and Political Science (LSE)
- Regent's University London
- University of London
- University College London (UCL)
- Birkbeck College
- Greenwich University
- Roehampton University London
- Kingston University
- City University
- The London Metropolitan University
- Reading University
- The University of Westminster
- The University of Nottingham Trent
- Saint Martins College of Art & Design
- The University of Edinburgh
- Middlesex University



GROUP EVENING CLASSES

Evening classes are perfect if you work during the day and need to develop your English for career purposes or pass an exam. Whether you are learning English for work or leisure, St George International evening English courses help you communicate more effectively.

TIMETABLE

Tuesday	18:30 – 20:30
Thursday	
Duration – 10 weeks	

FEES

Price 10 weeks	£450
One-off registration fee	£30
Course renewals do not incur a registration fee	

GENERAL ENGLISH

The General English evening course covers the main English language skills with a particular focus on improving your fluency and building confidence when speaking English.

BUSINESS ENGLISH

This course is for people who want to become more confident with the practical English they need for the workplace and business situations.

IELTS

The IELTS exam is a good choice if you're preparing to study or work in the UK. IELTS is recognised as an entrance requirement by most universities. IELTS is also accepted by many employers and government immigration agencies as a proof of English skills.



YOUNG LEARNERS



SGI YOUNG LEARNER COURSES IN CENTRAL
LONDON, YOUNG COMMUNICATORS 8 TO 12
YEARS, YOUNG EXPLORERS 13 TO 17 YEARS

YOUNG LEARNERS

SGI Young Learner Courses are designed to improve confidence and fluency in English, and develop life skills such as teamwork, respect and responsibility. We recognise that every student is a unique individual – each participant is encouraged to maximise their own potential.

The courses are carefully designed to focus on communication skills and building confidence. Students are given plenty of opportunity to speak in class and will be able to develop their ability through a number of interesting learning activities.

Teachers are knowledgeable, warm and friendly and work very hard to give you a truly rewarding experience. They use a range of professional learning materials to help each student maximise progress while developing skills to improve their learning of English even after the course ends.

OPTIONAL EXTRAS (AT ADDITIONAL COST)

- Transfers
(from all London airports and rail terminals)
- **SGI Family Summer London**
Parents and other family members can take an Adult English course at SGI while their children attend the Young Learner Course

DOOR-TO-DOOR CAR SERVICE

- Available for students of 10 years and over
- £125 per week for addresses within two miles of the school
- £175 for addresses 2–4 miles from the school
- For addresses over 4 miles from the school, please contact SGI



YOUNG LEARNER COURSES

ABOUT THE COURSE

- 1 to 12 week courses
- 13 June to 20 August 2022
- Small groups (Maximum 15 students)
- Lessons divided up by age group as well as by language level
- All English levels accepted
- Weekday programme 08:45 to 17:00, 1 hour lessons
- Individual guidance and monitoring of progress by your teacher
- Enjoyable and effective learning activities
- Sports, fun and cultural activities
- All course materials included
- End of course SGI Certificate and academic report



YOUNG LEARNERS' COURSE

AGE GROUP

- 8 – 17 years

ACCOMMODATION & MEALS

- Many of our junior students travel to the UK with their parents and stay in hotels or apartments.
- 🍴 Includes hot lunches (or packed lunches for trips)
- 🍏 Healthy break-time snacks

ACTIVITIES 📍

- **Young Communicators:** At least one full-day and 1 half-day excursion per week
- **Young Explorers:** At least one full-day and 4 half-day excursions per week

YOUNG LEARNERS' COURSE HOMESTAY

AGE GROUP

- 14+ years

ACCOMMODATION & MEALS

- Homestay
- 🍴 All meals included
- 🚶 30–50 Mins travel (Zones 2–3)
Optional door-to-door service

ACTIVITIES 📍

- At least one full-day and 4 half-day excursions per week

| YOUNG LEARNER EXCURSIONS

SGI PROGRAMMES OFFER A RICH VARIETY OF SPORTS, CREATIVE ACTIVITIES, EXCURSIONS, AND CULTURAL VISITS IN LONDON AND BEYOND.



EXAMPLE TIMETABLE GENERAL ENGLISH ONLY

08:45 – 10:45	Group English
10:45 – 11:00	Break
11:00 – 12:00	Group English

EXAMPLE TIMETABLE GENERAL ENGLISH AND CONVERSATION

08:45 – 10:45	Group English
10:45 – 11:00	Break
11:00 – 12:00	Group English
12:10 – 13:10	Conversation

EXAMPLE TIMETABLE GENERAL ENGLISH AND ACTIVITIES

08:45 – 10:45	Group English
10:45 – 11:00	Break
11:00 – 12:00	Group English
12:00 – 13:30	Lunch
13:30 – 17:00	Activities

EXAMPLE EXCURSIONS

Example London destinations are: Science Museum, London Eye, London Zoo, Tower Bridge, Natural History Museum and Greenwich.

Optional Saturday excursions (with parents) are: Oxford, Cambridge, Stratford-upon-Avon, Brighton, Woburn Safari, Windsor Castle, Canterbury and Bath.

YOUNG LEARNER COURSE RESIDENTIAL

ABOUT THE COURSE

- 2-week courses
- 03 July to 30 July 2022
- Small groups (Maximum 15 students)
- Classes graded by age and level
- Week-day programme 09:00 to 16:45
- Individual guidance and monitoring of progress by your teacher
- Enjoyable and effective learning activities
- Sports, fun and cultural activities every evening
- End of course SGI certificate
- Activity programme





YOUNG LEARNER COURSE RESIDENTIAL

AGE GROUP

- 14+ years

ACCOMMODATION & MEALS

- **Location:**
London University residence (UCL)
-  All meals included
-  30–50 Mins travel (Zones 2–3)
Weekly travel pass included

ACTIVITIES

- At least one full-day and 4 half-day excursions per week
- Additional evening activities

DATES

2-week courses

03 – 30 July

YOUNG LEARNER EXCURSIONS RESIDENTIAL



YOUNG EXPLORERS' RESIDENTIAL (12-17 YRS) – EXAMPLE WEEK

SUNDAY	MONDAY	TUESDAY	WEDNESDAY	THURSDAY	FRIDAY	SATURDAY
Arrivals	09:00 – 12:10					Cambridge
	Lessons					
	12:10 – 12:40 Lunch					
	Afternoon Activities					
	London Zoo	Natural History Museum	Sports Art & crafts Picnic	Sea Life London Aquarium	Camden Lock	
18:00 Dinner						
Evening Activities						
Regents Park	London by Night Tour	Capture the Flag	Chill Evening	Bowling	Disco Evening	
21:30 Free Time – 22:00 Lights Out						

Example destinations during the afternoon and evenings are: Science Museum, British Museum, London Eye, Covent Garden, Tower Bridge, Harry Potter Tour, Thames River Cruise, Madame Tussauds, Natural History Museum and Buckingham Palace.

Saturday excursions may include Oxford, Cambridge, Stratford-upon-Avon, Brighton, Woburn Safari Park, Windsor Castle, Canterbury and Bath. Please note that SGI reserves the right to change schedules. Optional activities for Sports, Arts & Crafts and Explorer can include: football, volleyball, rounders, cricket, dance, drama, photography, sketching, t-shirt making, walking tours to interesting places etc. Chill time can include time for self-study, laundry etc.

ACCOMMODATION IN LONDON



SGI HAS A RANGE OF ACCOMMODATION OPTIONS FOR YOU TO CHOOSE FROM, INCLUDING MODERN STUDENT RESIDENCES, HOMESTAYS, GUEST HOUSES OR EVEN A HOTEL IF YOU PREFER.

ACCOMMODATION IN LONDON

AT SGI, WE KNOW THAT WHEN YOU ARE AWAY FROM HOME IT IS IMPORTANT THAT YOU FEEL COMFORTABLE WHEREVER YOU LIVE. THAT'S WHY WE OFFER A RANGE OF STUDENT ACCOMMODATION OPTIONS TO SUIT YOUR PREFERENCES.

HOMESTAY ACCOMMODATION

Live with an English-speaking host and experience life in a London homestay. Homestays are a cost-effective way to stay in London and provide opportunities for you to practise your English.

- Homestays are clean and comfortable and enable students to study quietly
- Homestay hosts are able to provide breakfast and/or evening meals
- The location of our homestay accommodation is within easy reach of bus and tube options to reach the school

During busy periods, we sometimes use homestays that are carefully selected by an external agency.

KEY FACTS



Breakfast + Optional evening meal



Option for private bathroom

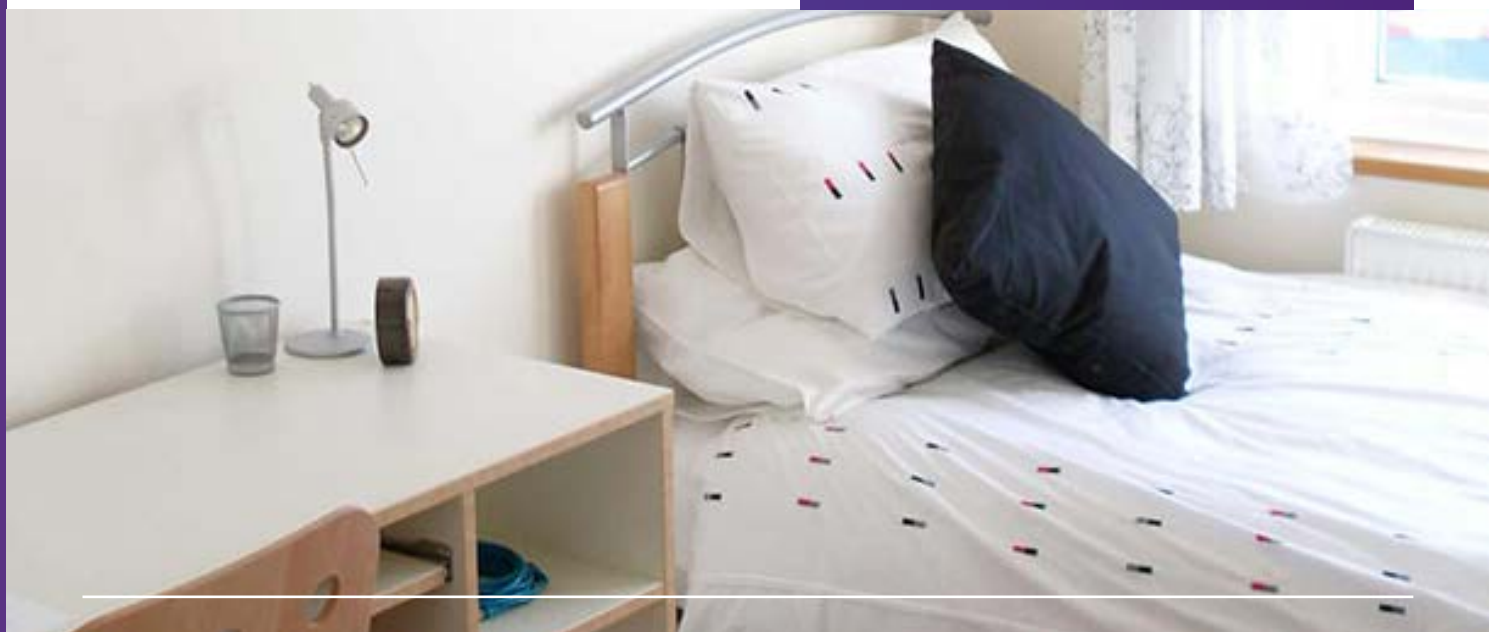


Travel time to school 30 – 50 minutes

TRANSPORT



Options of Category A (Zone 1 & 2) or B (Zone 3 & 4)

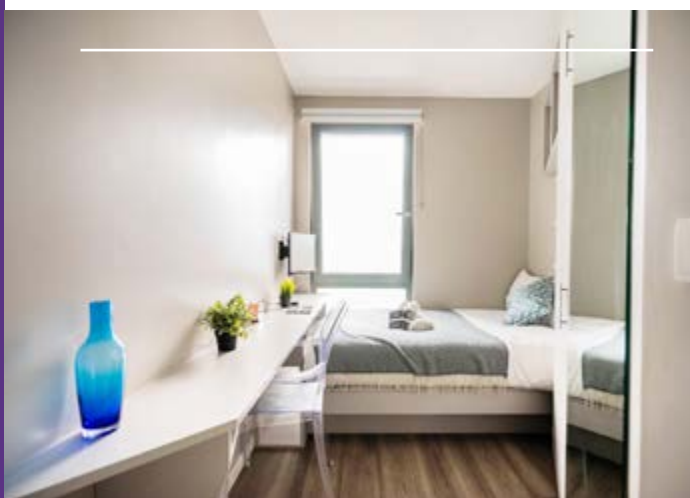


ACCOMMODATION IN LONDON

STUDENT RESIDENCES

Many students who prefer a more independent approach can choose to stay at a student residence in Central London. These residences provide the freedom and flexibility many of our students are looking for, right in the heart of London. There is a range of options to choose from. Some residences have en-suite facilities as well as fitness and entertainment facilities included in the price. There is certain to be something to suit you.

- Depending on the residence, you may choose either a single room or if you are coming with a friend, a twin room.
- Some of the residences offer breakfast or evening meal, and others are self-catering.



KEY FACTS



Various options



Option for en-suite bathroom



Travel time to school
9 – 30 minutes

TRANSPORT



All located near
underground stations

HOTELS AND APARTMENTS

SGL can also help arrange your own hotel or apartment accommodation all around Central London. We can recommend a wide range of reasonably priced 2 – 5 star hotels in the capital. With great rooms and service, student living has never been so comfortable.

KEY FACTS



Self-catering



En-suite bathroom



10 –15 minutes walk or
15 minutes by underground

TRANSPORT



All located near underground
stations or within walking distance



ACTIVITY PROGRAMME

EXPERIENCE 'LONDON LIFE' WITH ST GEORGE INTERNATIONAL

St George International's enrichment programme of social and cultural activities has been designed to ensure you learn as you visit a number of great places in London. You will also meet a lot of interesting people and improve your English by practising what you've learned in class in a relaxed and engaging environment. There is no better city than London in which to do this. At SGI we want you to experience British culture and get to know as much of London as possible. Our activity organisers will help you make the most out of your stay – however short or long it may be – in one of the most exciting cities in the world

MAKING THE MOST OF YOUR STAY

We believe that SGI's activity programme will help you have a memorable time in London, making new friends, meeting lots of interesting people and most importantly, improving your English!

SAMPLE ACTIVITIES

- Boat trip to Greenwich from Tower Bridge
- A visit to Hampton Court Palace including the world famous Kew Gardens
- A walk through Jack the Ripper's neighbourhood in the East End of London
- Theatre trips to Shakespeare's Globe and the West End
- Fun trips like ten-pin bowling followed by a restaurant meal near the school
- A tour of the local pubs of Fitzrovia, popular with writers and artists for over 100 years
- The Tate Modern and then over the 'wobbly' Millenium bridge to St Paul's Cathedral
- Visit Buckingham Palace and near-by St James's Park

There are also visits to lesser known attractions which only Londoners know!



TIMETABLE

ADULT CLASSES

	09:15 – 10:45	Break 10:45 – 11:00	11:00 – 12:30	Lunch 12:30 – 13:00	13:00 – 14:00	14:00 – 15:10	15:10 – 16:10
General English							
Combo 4					M – Th		
Combo 8					M – Th	M – Th	
Combo 12					M – Th	M – Th	M – Th
Intensive English					M – Th		
Intensive Combo 4						M – Th 14:10– 15:10	
Business English							
Business English Plus					M – Th		
Combo 4					M – Th		
Combo 8					M – Th	M – Th	
Combo 12					M – Th	M – Th	M – Th
IELTS Preparation							
IELTS Intensive					M – Th		
Combo 4					M – Th		
Combo 8					M – Th	M – Th	
Combo 12					M – Th	M – Th	M – Th

YOUNG LEARNERS

	08:45 – 10:45	Break 10:45 – 11:00	11:00 – 12:00	12:10 – 13:10	Lunch 12:00 – 13:30	13:30 – 17:00
General English						
General English and Conversation						
General English and Activities						

GROUP EVENING CLASSES

	18:30	20:30
Group Class (Tuesday & Thursday)		

* All course Monday to Friday unless stated otherwise
M – Th: Monday to Thursday

SGI STUDENT EXPERIENCE

ARRIVAL

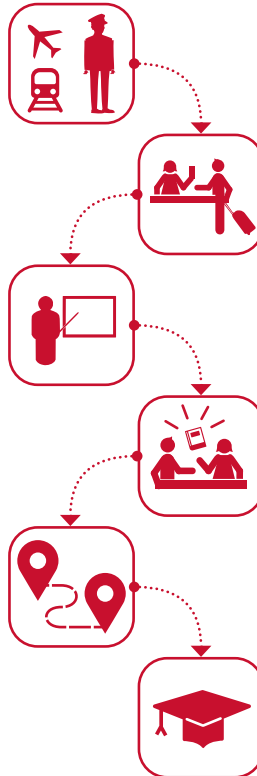
Select our 'meet and greet' airport transfer service, and our courier will meet you at the airport and take you to your accommodation. We also provide public transport information for students travelling independently.

YOUR COURSE

You will meet new people and make new friends immediately. Our experienced teachers will focus on your individual needs to ensure you reach your learning goals. Your teachers will give you techniques to maximise your potential during every lesson.

ACTIVITIES

Every week SGI provides a carefully designed programme of social and cultural activities to enable students to practise their language skills in real situations. At weekends, there are optional excursions to interesting places.



THE FIRST DAY

Our friendly staff will greet you on arrival in school. There is a meeting to introduce you to your course and activities as well as other useful information about your time with SGI in London.

PROGRESS

Regular progress checks give you a clear understanding of the improvements you make. Students attending long-term courses have regular sessions with their tutor to provide feedback on progress and tips for obtaining the best possible results from the course.

END-OF-COURSE CERTIFICATE

All students who attend SGI courses receive an end-of-course certificate with a report on progress made. Teachers can provide information on suitable external examinations and tests.



ST GEORGE
INTERNATIONAL
ENGLISH IN
LONDON

TEL
EMAIL
ADDRESS

+44 (0)207 299 1700
info@stgeorges.co.uk
10 Great Turnstile, London WC1V 7JU

